



PRODUCT DESCRIPTION

Recessed PAR20/PAR16 downlight luminaire with 3/4" grooved deep baffle aperture. Fixture has 50° visual cutoff to lamp and lamp image. Sealed Air-Loc housing eliminates leak-paths to ensure maximum energy savings and controls plenum sound transmission. IC rated housing for use in direct contact with insulation.

PRODUCT SPECIFICATIONS

Baffle Grooved deep baffle available in white or black • Provides 50° lamp and lamp image cut-off.

Trims Style Utilizes torsion spring retention for tight, secure fit to ceiling • Trim ring features beveled knife edge for clean ceiling interface.

Socket Medium base porcelain socket with nickel plated copper screw shell.

Lamp One 50W PAR20 or 60W PAR16 lamp.

Codes/Labels UL and cUL listed for direct contact with insulation, through-branch wiring, damp locations • Meets energy code Air Leakage requirements per ASTM E283 • Product thermally protected • Union made.

Proprietary Bar Hanger System Patent pending Pro-VI™, telescoping bar hanger system with locking set screws, permits quick placement of housing within 24" O.C. joists or suspended ceilings • Robust bar eliminates flexing regardless of fixture position • Integral T-bar notch with locking tabs secures housing to suspended ceiling grid • Captive bugle-headed ring shank nail for quick one-step installation • Bar Hanger foot aligns to bottom of construction joist and breaks away for use in suspended ceilings.

Junction Box Rated for 4 No. 12 AWG 90° C through branch circuit conductors and includes (6) 1/2", (1) 3/4", and (4) Non-metallic sheathed cable knock-outs • Push-in electrical connectors for field connections.

Housing/Mounting Frame Steel plaster frame and aluminum housing painted black for visually dark interior • V-Notch in plaster frame aids fixture alignment during installation • Patent pending Tru-Line™ Adjustment Mechanism featuring +/- 1/2" translation aids fixture alignment after installation, prior to drywall.

Ceiling Thickness 1/2" - 7/8" ceiling standard • For thicker ceilings, order CTA4N-125 (7/8"-1 1/4"), CTA4N-163 (1 1/4"-1 5/8") or CTA4N-200 (1 5/8" - 2").

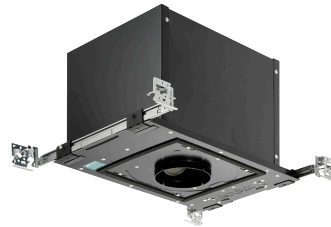
RECESSED DOWNLIGHT
 3-1/4" BAFFLED APERTURE
 IC Rated, 50W PAR20 or
 60W PAR16
IC13N, 434N TRIM

Project: _____

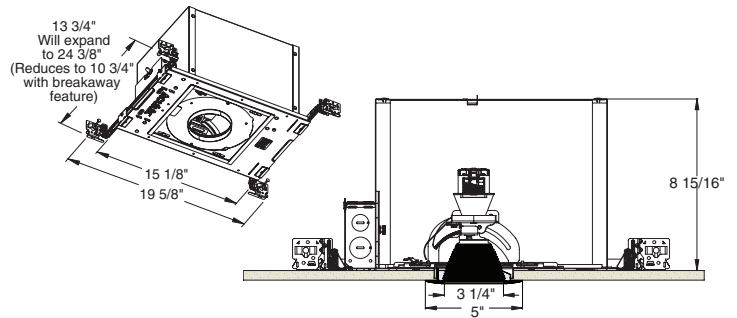
Fixture Type: _____

Location: _____

Contact/Phone: _____



DIMENSIONS



4 1/4" CEILING CUTOUT

Housings

Catalog #	Description
IC13N	Line Voltage Recessed

Accessories

Cat. #	Description
CTA4N-125	1 1/4" Thick Ceiling Adapter
CTA4N-163	1 5/8" Thick Ceiling Adapter
CTA4N-200	2" Thick Ceiling Adapter

To order, specify catalog number.

Downlight Baffle



Trim Ring	Description
434NB-WH	Black Baffle
434NB-ABZ	Black Baffle
434NB-SC	Black Baffle
434NW-WH	White Baffle, White Ring

Trim Ring Finish: ABZ - Classic Aged Bronze, SC - Satin Chrome, WH - White.

