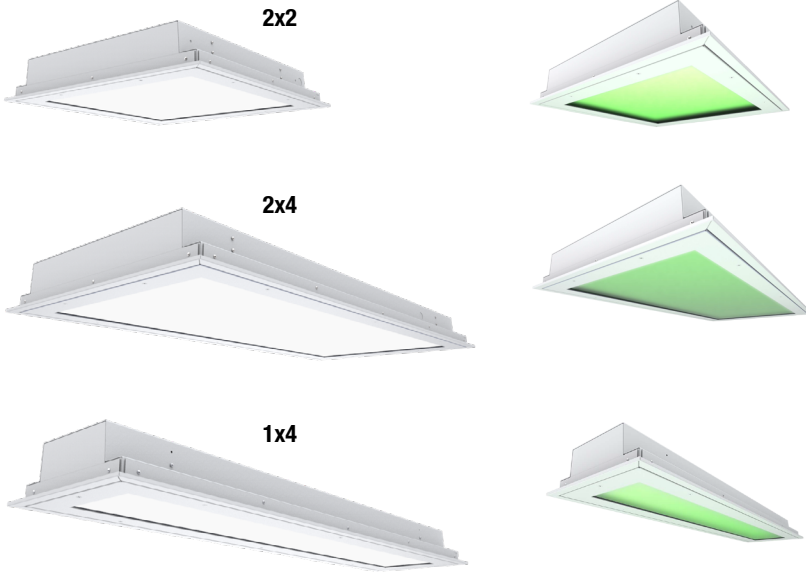


Type:
Project:



HIGHLIGHTS

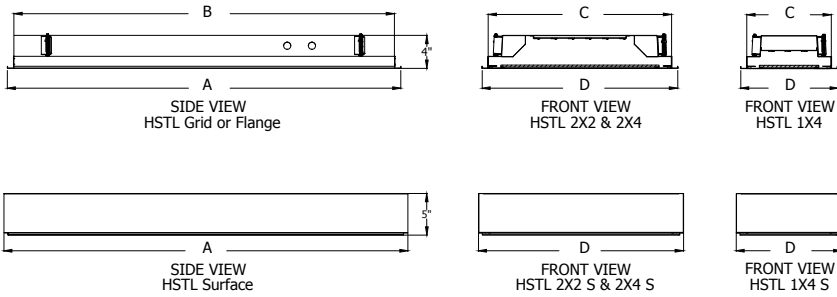
- Up to 10,000 lumens in 1x4, 12,000 lumens in 2x2, & 30,000 lumens in 2x4
- Surface, grid, and flange mounting available
- Machine-welded housing
- Two distribution options: symmetric and asymmetric
- Static white, red, green, amber, & combo of white and color
- Dual dimming circuits with shared and separate neutrals
- Frosted acrylic and polycarbonate lens options
- Integrated occupancy sensor option
- Gloss and matte white antimicrobial finishes standard
- Base ambient operating temperature: -4°F (-20°C) to 104°F (40°C)
- nLight® wired and wireless options
- Listings: IP65 standard, IP66 optional, ISO 5-8 (Class 100-100,000), MIL-STD-461G, NSF Splash Zone 2, BioSafety_Levels 1 & 2

TYPICAL APPLICATIONS

Operating room, clean room, laboratory, and pharmacy



DIMENSIONS



Series	Mounting	Size	(A) Overall Length	(B) Housing Length	(C) Housing Width	(D) Overall Width
HSTL	G or F	2X4	47-3/4"	46-1/4"	22-1/4"	23-3/4"
		2X2	23-3/4"	22-1/4"	22-1/4"	23-3/4"
		1X4	47-3/4"	46-1/4"	10-1/4"	11-3/4"

*Note: When selecting 347v, additional top housing adds 2-5/8" to fixture height.

Series	Mounting	Size	(A) Overall Length	(D) Overall Width
HSTL	S	2X4	48-11/16"	24-3/4"
		2X2	24-3/4"	24-3/4"
		1X4	48-11/16"	12-3/4"

PERFORMANCE DATA

Lumen Output

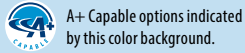
Lumen values are from photometric tests from an accredited laboratory. Data is considered to be representative of the configurations shown, within generally accepted industry tolerances. Contact factory for performance data on any configurations not shown here.

*Performance data based upon SYD (Symmetrical Distribution)/ALM (Acrylic Lens Material)/40K /80CRI

Fixture	Nominal Lumens	Delivered Lumens	Input Watts	Lumens/Watt
HSTL 1X4	3000LM	2744	27	102
	5000LM	4080	45	91
	7000LM	6778	62	109
	10000LM	8712	83	105

Fixture	Nominal Lumens	Delivered Lumens	Input Watts	Lumens/Watt
HSTL 2x2	3000LM	3353	27	126
	5000LM	5100	42	120
	7000LM	6909	58	118
	10000LM	10006	84	119
	12000LM	11604	101	115

Fixture	Nominal Lumens	Delivered Lumens	Input Watts	Lumens/Watt
HSTL 2x4	3000LM	3311	22	151
	5000LM	5563	38	146
	7000LM	8148	59	138
	10000LM	10380	81	128
	15000LM	14216	122	116
	18000LM	21937	154	143
	24000LM	29238	216	135



CATALOG NUMBER

Example: HSTL 2X4 F 120 ASD PCM250 15000LM 40K 80CRI SGRN ZT MIN1 2CN IAW TRS GWAM

Series	Size	Mounting	Voltage	Distribution	Lens	Output
HSTL Surgical Troffer	2X2 2' X 2' 2X4 2' X 4' 1X4 1' X 4'	G Grid F Flange S* Surface <i>*Not available w/ 347, NLIGHT, overlapping door frames, pre-wire whips, BGTD, or CP</i>	MVOLT* 120-277V 120 120V 277 277V 347** 347V <i>*Not available with BGTD or E10WLCP **Not available w/ multiple circuits, BGTD, or E10WLCP</i>	ASD Asymmetrical Distribution SYD Symmetrical Distribution	ALM* Acrylic Lens Material PCM125 Polycarbonate Lens 1/8" Thick PCM250 Polycarbonate Lens 1/4" Thick <i>*Not available w/ TRS hardware</i>	[BLANK] When Selecting RED, GRN, or AMB 3000LM 3,000 Nominal Lumens 5000LM 5,000 Nominal Lumens 7000LM 7,000 Nominal Lumens 10000LM 10,000 Nominal Lumens 12000LM 12,000 Nominal Lumens 15000LM 15,000 Nominal Lumens 18000LM 18,000 Nominal Lumens 24000LM* 24,000 Nominal Lumens <i>*Not available w/ E10WLCP</i>

LED Color Temperature	LED Color Rendering	Secondary Color	Control Input	Minimum Dimming Level	Circuits
27K 2700K 30K 3000K 35K 3500K 40K 4000K 50K 5000K RED* Red GRN* Green AMB* Amber <i>*Not available w/ E10WLCP **Requires specified voltage when used with G or F mount</i>	[BLANK] When Selecting RED, GRN, or AMB 80CRI 80+ CRI 90CRI 90 CRI 95CRI 95+ CRI	[BLANK] No Secondary Color Required SGRN* GREEN SRED* RED SAMB* AMBER <i>*Secondary color selection requires 2CN circuiting **Secondary colors not available w/ NLTAIR2 *Requires specified voltage when used with G or F mount</i>	ZT* 0-10V Dimming DALI DALI ECOD** Lutron Ecosystem Driver NLIGHT*** NLight Enabled NLTAIR2**** NLight Air (Wireless) Enabled <i>*Only control input allowed with motion sensors **Requires MIN1 option ***Not available w/ BGTD ****Only available w/ 1 Dimming Circuit</i>	MIN10 Constant Current, Dimming To 10% MIN1 Constant Current, Dimming To 1% DARK Constant Current, Dimming To < 0.1%	[BLANK]* 1 Dimming Circuit 2C** 2 Non-Dimming Circuits (Shared Neutral) 2DIM*** 2 Dimming Circuits (Shared Neutral) 2CN**** 2 Circuit (Separate Neutral) <i>*Only circuiting allowed with BGTD option **Not available with PWS1836 or PWS1856LV ***Not available with motion sensors or PWS1846 ****Not available with PWS1846</i>

Mount Adapter	Fusing	Door Finish	Tamper Resistant	External Options
[BLANK] Single Mount RM* Row Mount RMP* Row Mount Pattern <i>*Only available w/ F mount</i>	[BLANK] No Fuse Required GLR* Fast-Blow Fuse GMF* Slow-Blow Fuse <i>*Not available w/ 2C or 2CN & BGTD</i>	IAW Inset Aluminum, Painted White IAN Inset Aluminum, Painted Silver IBSN Inset Brushed Stainless Steel, Natural OAW* Overlapping Aluminum, Painted White OAN* Overlapping Aluminum, Painted Silver OBSN* Overlapping Brushed Stainless Steel, Natural <i>*Not available w/ S mount</i>	[BLANK] Not Required TRS* Tamper Resistant Screws <i>*Not available with ALM lens</i>	[BLANK] Not Required PWS1836* 6' Pre-Wire, 18AWG, 3/8" Dia, 3 Wire - 1 Circuit PWS1846 6' Pre-Wire, 18AWG, 3/8" Dia, 4 Wire - 2 Circuit PWS1856LV* 6' Pre-Wire, 18AWG, 3/8" Dia, 5 Wire - 1 Circuit w/ Low Voltage Wires PWS1846 PWSLV** 6' Pre-Wire, 18AWG, 3/8" Dia, 4 Wire - 2 Circuit w/ Low Voltage Wires <i>*Not available w/ E10WLCP **Requires 2C circuit option Pre-Wire Whips not available w/ S mount or Modular Wiring System</i>

Modular Wiring System	Sensor	Emergency	Certification	Finish	US Made
[BLANK] Not Required RRLA RELOC®-Ready Luminaire "A" Wiring RRLB RELOC®-Ready Luminaire "B" Wiring RRLC RELOC®-Ready Luminaire "C" Wiring RRLC12S RELOC®-Ready Luminaire "C12S" Wiring RRLAB* RELOC®-Ready Luminaire Switch Leg #1 Wired to Pin #1, Switch Leg #2 Wired to Pin #2 RRLABE** Same as RRLAB w/ Emergency Driver Wired to Pin #3 RRLAE*** Same as RRLA w/ Emergency Driver Wired to Pin #2 RRL122N**** RELOC®-Ready Luminaire Circuit #1 Wired to Pin #1 & #4, Circuit #2 Wired to Pin #2 & #3 <i>*Requires 2C circuit **Requires 2C circuit and E10WLCP selection ***Requires E10WLCP ****Requires 2CN circuit RELOC®-Ready Luminaires not available w/ S mount or BGTD. Reference RELOC® link for additional information</i>	[BLANK] Not Required MSE6NWL* Embedded high mount 360° motion sensor, wet location, On/Off operation MSE62L3VWL* Embedded high mount 360° motion sensor, wet location, High/Low operation (2-level) MSE10NWL* Embedded low mount 360° motion sensor, wet location, On/Off operation MSE102L3VWL* Embedded low mount 360° motion sensor, wet location, High/Low operation (2-level) <i>*Requires ZT control input **Motion Sensors not available w/ BGTD option</i>	[BLANK] Not Required BGTD Generator Transfer Device E10WLCP Emergency Battery Pack 10w, Constant Power Certified in CA Title 20 EMG* Emergency nLight Device for use w/ Generator Supply EM Power <i>*Requires NLIGHT control input</i>	[BLANK] Not Required CP Chicago Plenum NOM NOM Certified ST3 Constructed w/ US Steel	GWAM Gloss White Antimicrobial MWAM Matte White Antimicrobial	[BLANK] Not Required BAA Buy America(n) Act and/or Build America Buy America Qualified

SPECIFICATIONS

Housing

Machine welded housing construction of 20-gauge cold rolled steel. Anti-microbial polyester powder paint finish standard. MIL-STD461G. Detachable flanges and surface mount option available.

Door

Hinged door frame sealed with closed cell silicone gasket. Lens is 1/8" clear acrylic with a clear polycarbonate lens option available.

Finish

Housing and door frame anti-microbial polyester powder paint is NSF Splash Zone 2 rated.

Mounting

Lay-in grid or sheet rock mounting utilize combination of swing-arms and support from building structure above fixture. Surface mount fixtures are mounted direct to sheet rock ceiling with support from building structure above fixture. Reference installation instructions for more information.

Source

Multiple LED lumen packages provided for (5) white color temperature options: 2700K, 3000K, 3500K, 4000K, or 5000K. Three optional secondary color LED available: Red (630nm), Green (518nm), Amber (580nm). All LED within a 2.5 step MacAdam ellipse.

LED Life

LED Light engines consisting of modular boards. LED rated for 100,000 hours L70 (white) and 120,000 hours L70 (colors)

LED Driver

eldoLED® driver provides smooth, continuous, flicker free dimming to dark < 20%. Insignificant inrush current at 120 and 277VAC. FCC Class A and B tested for EMI and RFI. Driver will be set for Logarithmic dimming curve. Luminaire Surge Protection Level: Designed to withstand up to 6kV/3kA per ANSI C82.77-5-2015.

Voltage

120 through 277v in 50 to 60Hz; 347v available with supplied integral stepdown transformer.

Circuits

Single and dual circuit options available with shared or separate neutrals.

Emergency Battery (Optional)

Integral emergency battery for operation of 90 minutes. Emergency battery pack, 10W, Linear Constant Power Certified in CA Title 20 MAEDBS.

Controls and System Networking Options

Optional integrated nLight® controls make each fixture addressable - allowing it to digitally communicate with other nLight enabled controls such as dimmers, switches, occupancy sensors, and photocontrols. Connection to nLight is simple. It can be accomplished with remote nLight AIR wireless or through standard Cat-5 cabling. (cabling "by others") nLight offers unique plug-and-play convenience as devices and luminaires automatically discover each other, while nLight AIR is commissioned easily through an intuitive mobile app.

Fixture Weight

(Weight may vary depending upon options or accessories selected.)
1x4: 28 lbs (12.7 kg)
2x2: 28 lbs (12.7 kg)
2x4: 45 lbs (20.4 kg)

Environment

Wet location IP65 listed. IP66 rated, from below fixture only, with overlapping door frame options. Cleanroom ISO 5-8 (Class 100-100,000) Environment

Certification

CSA certified to meet U.S. and Canadian standards (UL1598 and UL8750) or NOM Certified. IC and Non-IC rated options. Reference chart for noncompliant configurations requiring a thermal protector. Suitable for Bio Levels 1 & 2. Certified for NSF Splash Zone 2. Base grid and flange mount configurations for use in ambient temperatures ranging from -20°C (-4° F) to +40°C (+104°F) with exception of the following lumen packages (1x4 - 10000LM; 2x2 - 10000LM and 12000LM; 2x4 - 18000LM and 24000LM). Also, all surface mount, emergency, or control options are +25°C (77°F) maximum.

Government Procurement

BAA – Buy America(n) Act: Product with the BAA option qualifies as a domestic end product under the Buy American Act as implemented in the FAR and DFARS. Product with the BAA option also qualifies as manufactured in the United States under DOT Buy America regulations. BABA – Build America Buy America: Product with the BAA option also qualifies as produced in the United States under the definitions of the Build America, Buy America Act. Please refer to www.acuitybrands.com/resources/buy-american for additional information.

Warranty

5-year limited warranty. This is the only warranty provided and no other statements in this specification sheet create any warranty of any kind. All other express and implied warranties are disclaimed. Complete warranty terms located at: www.acuitybrands.com/support/customersupport/terms-and-conditions

NOTE: Actual performance may differ as a result of enduser environment and application. All values are design or typical values, measured under laboratory conditions at 25°C.

A+ Capable Luminaire

This item is an A+ capable luminaire, which has been designed and tested to provide consistent color appearance and out-of-the-box control compatibility with simple commissioning.

- All configurations of this luminaire meet the Acuity Brands' specification for chromatic consistency
- This luminaire is part of an A+ Certified solution for nLight® control networks when ordered with drivers marked by a **shaded background***
- This luminaire is part of an A+ Certified solution for nLight control networks, providing advanced control functionality at the luminaire level, when selection includes driver and control options marked by a **shaded background***

To learn more about A+, visit www.acuitybrands.com/aplus.

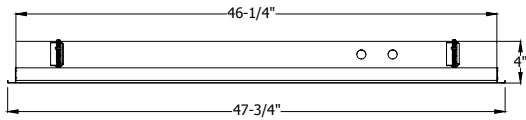
*See ordering tree for details

PHOTOMETRICS

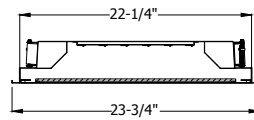
Consult www.acuitybrands.com for photometry.

Photometric data based on test results from an independent NIST traceable testing lab. IES data is available at www.healthcare-lighting.com. Always refer to our website for the latest IES file updates.

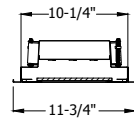
DIMENSIONS



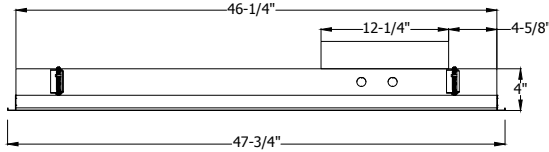
GRID & FLANGE
1X4 & 2X4 SIDE VIEW



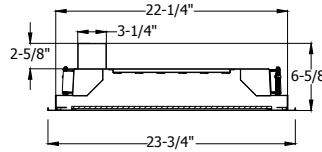
GRID & FLANGE
2X2 & 2X4 FRONT VIEW



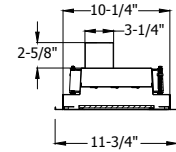
GRID & FLANGE
1X4 FRONT VIEW



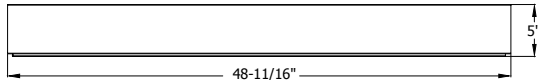
GRID & FLANGE
1X4 & 2X4 SIDE VIEW 347V (BACK BOX)



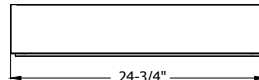
GRID & FLANGE
2X2 & 2X4 FRONT VIEW 347V (BACK BOX)



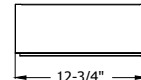
GRID & FLANGE
1X4 FRONT VIEW 347V (BACK BOX)



SURFACE MOUNT
1X4 & 2X4 SIDE VIEW



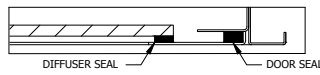
SURFACE MOUNT
2X2 & 2X4 FRONT VIEW



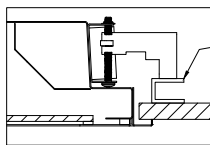
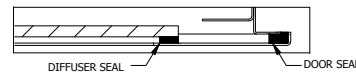
SURFACE MOUNT
1X4 FRONT VIEW

DOOR FRAME

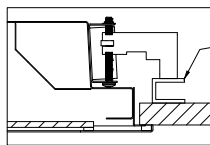
INSET DOOR



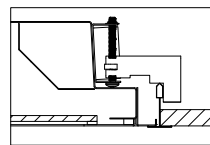
OVERLAP DOOR



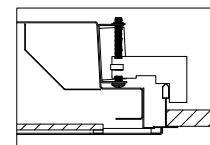
FLANGE MOUNTING INSET



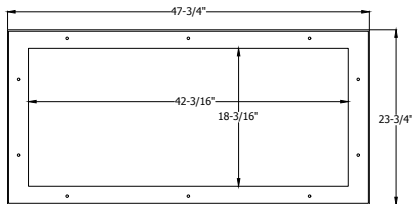
FLANGE MOUNTING OVERLAP



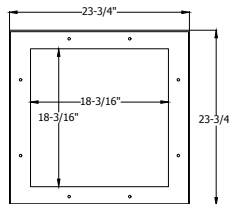
GRID MOUNTING INSET



GRID MOUNTING OVERLAP

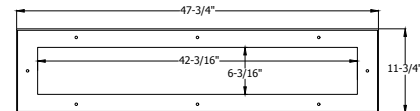


2X4 OVERLAP DOOR
BOTTOM VIEW

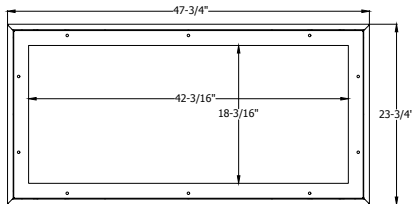


2X2 OVERLAP DOOR
BOTTOM VIEW

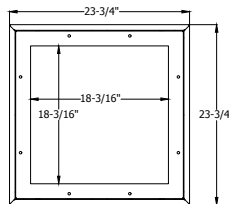
Note: Standard door frame hardware: 8-32 x 5/8 PH FH MACHINE SCREW ST STL
TX15 security-type hardware (TRS) is: 8-32 X 5/8 FH PIN-TORX MACHINE SCREW SS



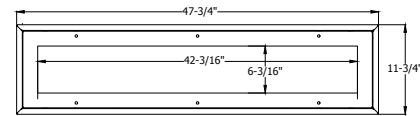
1X4 OVERLAP DOOR
BOTTOM VIEW



2X4 INSET DOOR
BOTTOM VIEW



2X2 INSET DOOR
BOTTOM VIEW



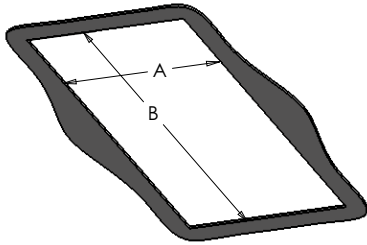
1X4 INSET DOOR
BOTTOM VIEW

MOUNTING

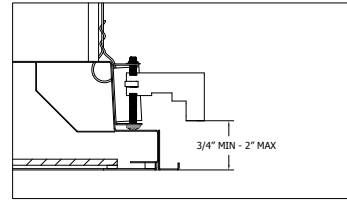
Rough-In Dimensions

For more mounting information and detailed views please read the installation instructions

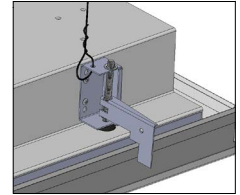
Size	A (Inches)	B (Inches)
1X4	10-1/2"	46-1/2"
2X2	22-1/2"	22-1/2"
2X4	22-1/2"	46-1/2"



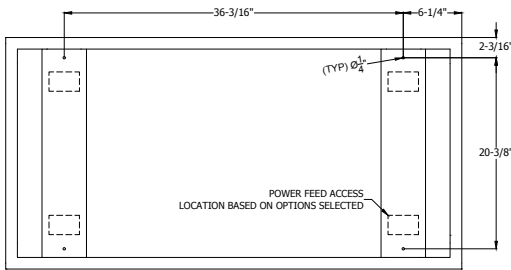
SWING-ARM REACH: 1-3/4"
SWING-ARM ADJUSTABLE RANGE: 3/4" - 2"



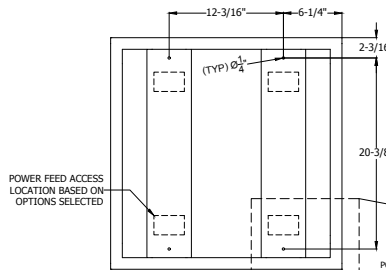
GRID MOUNT



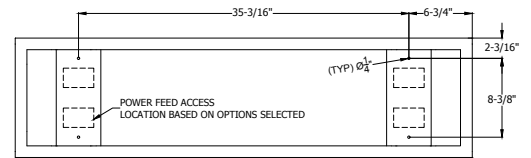
SUPPORT WIRES REQUIRED



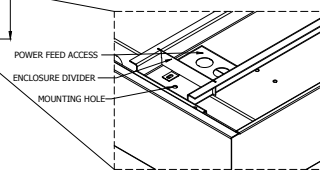
2X4 SURFACE MOUNT TOP VIEW



2X2 SURFACE MOUNT TOP VIEW



1X4 SURFACE MOUNT TOP VIEW

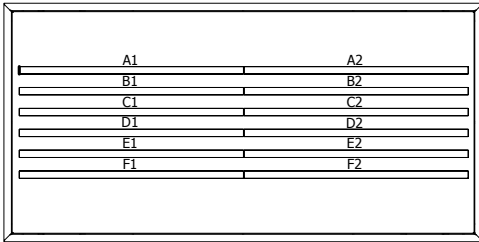


TYPICAL DETAIL

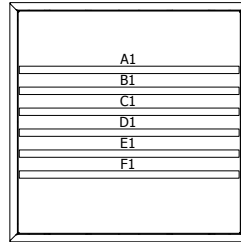
NON-IC CONDITION

When Recessed HSTL is Non-IC	
Fixture	Options
HSTL 1X4 HSTL 2X2 HSTL 2X4	When Static Color is included (AMB, GRN or RED)
	When Secondary Color is included (SAMB, SGRN, or SRED)
	When Emergency Battery is included (E10WLCP)
	When Generator Transfer Device is included (BGTD)
HSTL 1X4	When Lumen Output of 7000LM or 10000LM selected
HSTL 2X2	When Lumen Output of 7000LM, 10000LM, or 12000LM selected
HSTL 2X4	When Lumen Output of 15000LM, 18000LM, or 24000LM selected

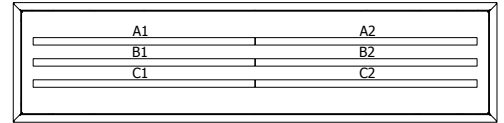
SECONDARY COLOR / EMERGENCY



2X4 SURFACE / GRID / FLANGE
BOTTOM VIEW



2X2 SURFACE / GRID / FLANGE
BOTTOM VIEW



1X4 SURFACE / GRID / FLANGE
BOTTOM VIEW

BOARD ILLUMINATED W/ SECONDARY COLOR OPTION													
SERIES	LED COLOR	A1	A2	B1	B2	C1	C2	D1	D2	E1	E2	F1	F2
HSTL 1X4	SGREN			X	X								
	SRED			X	X								
	SAMB			X	X								
HSTL 2X2	SGREN			X						X			
	SRED			X						X			
	SAMB			X						X			
HSTL 2X4	SGREN			X	X					X	X		
	SRED			X	X					X	X		
	SAMB			X	X					X	X		

BOARD ILLUMINATED W/ E10WLCP EMERGENCY BATTERY PACK																
SERIES	LUMEN OUTPUT	CIRCUITS	SECONDARY COLOR	A1	A2	B1	B2	C1	C2	D1	D2	E1	E2	F1	F2	
HSTL 1X4	3000-5000			X	X	X	X	X	X							
		2C			X		X	X	X							
		2DIM				X		X	X							
		2CN				X		X	X							
	7000-10000			Yes		X		X	X							
		2C				X		X	X							
		2CN				X		X	X							
HSTL 2X4	3000-5000			X	X	X	X	X	X	X	X	X	X	X	X	
		2C			X	X	X	X	X							
	5000-7000				X	X			X	X	X	X			X	X
		2C			X	X			X	X	X	X			X	X
		2DIM			X	X			X	X	X	X			X	X
		2CN			X	X			X	X	X	X			X	X
	7000-10000			Yes	X	X			X	X	X	X			X	X
		2C			X	X	X	X	X	X						
		2DIM			X	X	X	X	X	X						
		2CN			X	X	X	X	X	X						
10000-15000				X	X			X	X							
	2C			X	X			X	X							
	2DIM			X	X			X	X							
	2CN			X	X			X	X							
18000				X									X	X		
18000	2CN		Yes	X									X	X		

SENSOR DATA



Embedded Motion Sensor

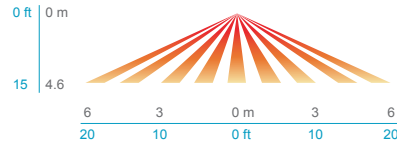
(see www.acuitycontrols.com for additional information)

- 360 passive infrared motion detection coverage
- Mounts into 2.65" (6.7 cm) square opening in fixture minimum depth 1.50" (3.8cm)
- On/Off dim
- IP66 rated
- Photocell and 0-10VDO dimming options

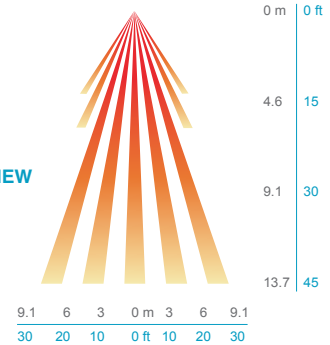
HIGH MOUNT 360° LENS (MSE6xxx (aka.: Sensor Switch® SBG 6)

- Best choice for 15 to 45 ft (4.57 to 13.72 m) mounting heights
- 15 to 20 ft (4.57 to 6.10 m) radial coverage overlaps area lit by a typical high bay fixture
- Excellent detection of large motion (e.g. walking) up to a 35 ft (10.76 m) mounting height
- Excellent detection of extra large motion (e.g. forklifts) up to a 45 ft (13.72 m) mounting height
- Tested to NEMA WD 7-2011

LOW VIEW



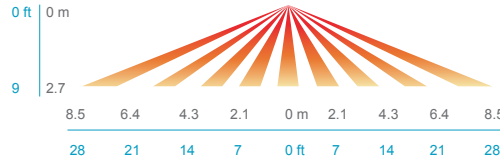
HIGH VIEW



LOW MOUNT 360° LENS (MSE10xxx (aka.: Sensor Switch® SBG 10)

- Best choice for large motion detection (e.g. walking)
- 360° conical shaped pattern
- Provides ~24 ft (7.32 m) radial coverage (~2000 ft²) when mounted at 9 ft (2.74 m)
- 7 to 15 ft (2.13 to 4.57 m) mounting heights provide 16 to 36 ft (4.88 to 10.97 m) radial coverage
- Detection range improves when walking across beams compared to into beams

SIDE VIEW



TOP VIEW

