

TIERRA

IGF4 STATIC WHITE

4" LED In-Grade Fixture

HIGHLIGHTS

- Hybrid sealing featuring independently encapsulated LED module and Driver module
- Mechanical tilt of 0°, 5°, or 10°
- Modular Design to facilitate easy of installation, driver replacement, and light source updates as technology advances
- UV Stabilized, impact and corrosion resistant materials for the roughest operating environments
- Optimal beam control with seven unique distributions
- Color temperatures available in 27K, 30K, 40K and Amber Limited Wavelength
- Superior performance with up to 1,100 delivered lumens and a max CBCP of 6,576

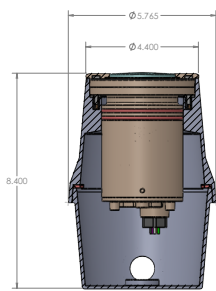
5
YEAR
warranty


IP68



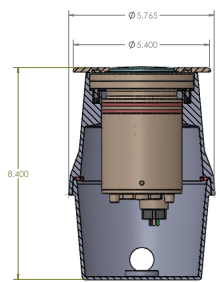
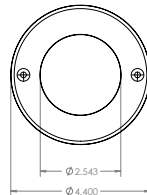
Specifications	Aluminum, Brass or Stainless Steel	Stainless Steel and Brass Wide Trim
Diameter:	4.40"	5.40"
	111 mm	137 mm
Height:	8.40"	8.40"
	213 mm	213 mm
Weight:	9.50LBS.	9.55LBS.

DIMENSIONS



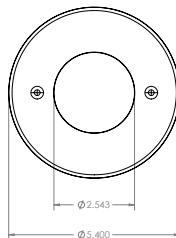
Aluminum, Brass or Stainless Steel

Aluminum, Brass or Stainless Steel



Stainless Steel Trim or Brass Trim

Stainless Steel Wide Trim or Brass Wide Trim

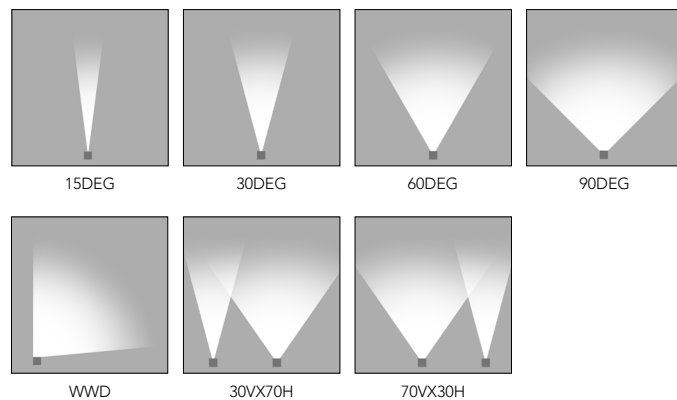


LUMEN PACKAGES

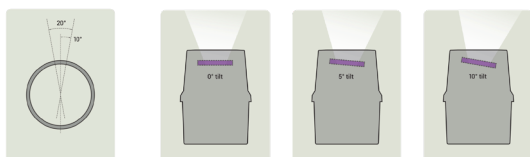
	15DEG	30DEG	60DEG	90DEG	WWD	30VX70H	70VX30H
Delivered Lumens	832	758	755	735	655	751	753
Watts	12.7	9.5	9.5	9.5	9.5	9.5	9.5
LPW	65	80	79	77	69	79	79
Peak Candela	6,576	1,772	797	364	1,366	1,302	1,272

Note: Information based on 4000K @ P2 Performance Package

STANDARD DISTRIBUTION



AIMING DETAILS


 AIMING ADJUSTMENT
0° to 20° HORIZONTAL

0° TILT

5° TILT

10° TILT

ORDERING INFORMATION
EXAMPLE: IGF4 BR LED P1 80CRI 27K MVOLT 15DEG 0T FLC 34B IHL ZT

Model*		Door Material*		Source*		Performance Package*		CRI*		Color Temperature*		Voltage*		Distribution*				
IGF4	In-Grade Fixture 4"	A	Aluminum	LED	LED	P1	P1	80CRI	80CRI	27K	2700K	12	12 Volt	15DEG	15°			
		BR	Brass			P2				30K	3000K		MVOLT			120-277 Volt	30DEG	30°
		SS	Stainless Steel			P3				40K	4000K		Note: 12 volt is only available with P1			50/60HZ	60DEG	60°
		SST	Stainless Steel Wide Trim			Note: 12 volt is only available with P1				90DEG	90°							
		BST	Brass Wide Trim			Note: 15DEG is not available with P3				WWD	Wall Wash Distribution							
								Note: AMBLW is only available with MVOLT and P1		30VX70H	30° x 70°	70VX30H	70° x 30°					

Tilt*	Lens*	Conduit Entries*		Internal Accessories		Control Input*		Finish			
0T	0° Tilt	FLC	Flat Lens Clear	34B	3/4" NPT Bottom (includes 2 3/4" bottom)	IHL	Internal Honeycomb Louver	ZT	0-10V Dimming (Dims to Dark)	BL	Black
5T	5° Tilt	FLCSR	Slip Resistant Lens	34S	3/4" NPT Side (includes 2 3/4" one on each side 180° apart)	IHL	Internal Honeycomb Louver	ELV	Reverse Phase	BZ	Bronze
10T	10° Tilt									BRS	Bronze Smooth
						Note: IHL is not available with 5T or 10T tilt options		Note: ZT & ELV are only available with MVOLT		BRT	Bronze Textured
						Note: IHL is not available with AMBLW				DBL	Black Smooth
						Note: WWD is not available with IHL				DDB	Designer Bronze
										DNA	Natural Aluminum
										NBS	Natural Bronze Smooth
										SND	Sand
										WH	White
										_Z	Zinc Undercoat (i.e.BLZ)
										Note: Zinc Undercoat provides corrosion protection for Marine Environment and Natatorium Construction	
										Note: Finish is only available with A (aluminum) Material	

Note: * is a required field

ELECTRICAL LOAD

Light Engines	System Watts	Input Current (A)			
		120	208	240	277
P1 15DEG	5.2	0.043	0.025	0.022	0.019
P1 30DEG+	4.8	0.040	0.023	0.020	0.017
P2 15DEG	12.7	0.106	0.061	0.053	0.046
P2 30DEG+	9.5	0.079	0.046	0.040	0.034
P3 30DEG+	13.8	0.115	0.066	0.058	0.050
AMBLW	13.7	0.114	0.066	0.057	0.049

PROJECTED LED LUMEN MAINTENANCE

Data references the extrapolated performance projections for the Fixture platform in a 25°C ambient, based on 13,000 hours of LED testing (tested per IESNA LM-80-08 and projected per IESNA TM-21-11).

To calculate LLF, use the lumen maintenance factor that corresponds to the desired number of operating hours below. For other lumen maintenance values, contact factory.

Based on 2700K-4000K LED color

Operating Hours	0	25,000	50,000	100,000
Lumen Maintenance Factor	1	0.9137	0.8521	0.7411

Note: Based on 15DEG

Operating Hours	0	25,000	50,000	100,000
Lumen Maintenance Factor	1	0.9437	0.907	0.8377

Note: Based in 30DEG +

LUMEN AMBIENT TEMPERATURE (LAT) MULTIPLIERS

Use these factors to determine relative lumen output for average ambient temperatures from 0-40°C (32-104°F).

Based on 2700K-4000K LED color

Ambient		Lumen Multiplier for 15DEG	Lumen Multiplier for 30DEG +
0°C	32°F	1.07	1.06
10°C	50°F	1.04	1.04
20°C	68°F	1.01	1.01
25°C	77°F	1.00	1.00
30°C	86°F	0.98	0.99
40°C	104°F	0.95	0.96

IGF4 Multiplier
SYMMETRIC DISTRIBUTIONS 15DEG-90DEG

IHL 0.69

ASYMMETRIC DISTRIBUTIONS 30VX70H & 70VX30H

IHL 0.49

LED LIFE: Reported L70@ >54,000 hours

CSA LISTING TEMPERATURE: -30°C through 25°C

PERFORMANCE DATA

LUMEN OUTPUT – IGF4

Lumen values are from photometric tests performed in accordance with IESNA LM-79-08. Data is considered to be representative of the configurations shown, within the tolerances allowed by Lighting Facts. Actual performance may differ as a result of end-user environment and application. Contact factory for performance data on any configurations not shown here.

Performance Package	System Watts	Distribution Type	Field Angle		Beam Angle		27K (2700K, 80CRI)			30K (3000K, 80CRI)			40K (4000K, 80CRI)		
			°H	°V	°H	°V	Max CD	Lumens	LPW	Max CD	Lumens	LPW	Max CD	Lumens	LPW
P1	5.2	15DEG	34	34	16	16	2,682	339	65	2,794	353	68	3,101	392	75
		4.8	30DEG	64	64	34	34	786	336	70	819	350	73	909	389
	60DEG	95	95	55	55	354	335	70	368	349	73	409	387	81	
	90DEG	131	131	92	92	161	326	68	168	339	71	187	377	79	
	WWD	69	70	33	32	606	290	61	631	303	63	701	336	70	
	30VX70H	103	50	64	24	577	333	69	601	347	72	668	385	80	
	70VX30H	51	105	24	66	564	334	70	588	348	72	652	386	80	
P2	12.7	15DEG	34	34	16	16	5,687	719	57	5,924	749	59	6,576	832	65
		9.5	30DEG	64	64	34	34	1,532	655	69	1,596	683	72	1,772	758
	60DEG	95	95	55	55	689	653	69	718	680	72	797	755	79	
	90DEG	131	131	92	92	315	636	67	328	662	70	364	735	77	
	WWD	69	70	33	32	1,182	566	60	1,231	590	62	1,366	655	69	
	30VX70H	103	50	64	24	1,126	649	68	1,173	677	71	1,302	751	79	
	70VX30H	51	105	24	66	1,100	651	69	1,146	678	71	1,272	753	79	
P3	13.8	30DEG	64	64	34	34	2,184	934	68	2,275	973	70	2,525	1,080	78
		60DEG	95	95	55	55	982	930	67	1,023	969	70	1,136	1,076	78
		90DEG	131	131	92	92	449	906	66	467	943	68	519	1,047	76
		WWD	69	70	33	32	1,684	807	58	1,754	841	61	1,947	933	68
		30VX70H	103	50	64	24	1,605	926	67	1,672	964	70	1,855	1,070	78
		70VX30H	51	105	24	66	1,568	928	67	1,633	966	70	1,813	1,073	78

Performance Package	System Watts	Distribution Type	Field Angle		Beam Angle		AMBLW		
			°H	°V	°H	°V	Max CD	Lumens	LPW
P1	13.7	15DEG	44	44	21	21	1,299	293	21
		30DEG	64	64	33	33	659	291	21
		60DEG	98	98	56	56	291	289	21
		90DEG	134	134	92	92	136	280	20
		WWD	73	75	34	32	491	257	19
		30VX70H	105	54	65	23	470	275	20
		70VX30H	53	103	23	63	490	298	22

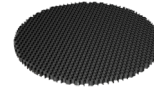
ACCESSORIES

INTERNAL



INTERNAL HONEYCOMB LOUVERS — IHL

Hexagonal cell louver with 45° cut-off for improved glare control and minimized field angle



DOOR MATERIAL



ALUMINUM DOOR

Aluminum die cast material, alloy 380 with clear coat standard.

Available with optional painted finish



BRASS DOOR

Brushed, corrosion resistant, alloy 385 brass material



STAINLESS STEEL DOOR

Brushed, corrosion resistant, alloy 304 stainless steel material

SPECIFICATIONS AND FEATURES

INTENDED USE: The IGF4 LED Ingrade Series is intended to provide years of trouble free operation for even the most severe direct burial applications. It utilizes a modular design to provide fast and simple installation along with easy to replace LED and driver modules if needed in future years for both maintenance and product efficiency gains. This product is ideal for all uplighting applications up to 1,100 lumens where a small footprint Ingrade is desired.

DOOR MATERIAL: Aluminum Door: Aluminum die cast material, alloy 380 with clear coat standard. Available with optional painted finish. Brass Door: Brushed, corrosion resistant, alloy 385 brass material. Stainless Steel Door: Brushed, corrosion resistant, alloy 304 stainless steel material.

ROUGH-IN SECTION: The robust polymer Rough-In section is molded from a U.V. stabilized material that is both impact and corrosion resistant for all types of environments. The rough-in utilizes a integral junction box to support easy access and initial installation.

CONDUIT ENTRIES: 3/4" NPT Bottom (includes 2 3/4" bottom) 3/4" NPT Side (includes 2 3/4" one on each side 180° apart)

FINISHING SECTION: The finishing section includes a standard die cast aluminum face plate with a corrosion resistant finish. Upgraded face plates are available in highly corrosion resistant stainless steel and brass with brushed finishes. Oversized trim face plate to trim out the finished installation hole for tile and other surface materials.

LED MODULE: The LED module utilizes a highly corrosive resistant die cast brass housing. The module accomplishes a dual purpose of water ingress and thermal management to protect the critical LED components and ensure years of serviceable life. Double sealed from the environment utilizing a moisture blocking fitting and silicone seals are trademark to Hydrel quality.

OPTICS: 15DEG, 30DEG, 60DEG, 90DEG Wall Wash, 30VX70H and 70VX30H

VOLTAGE: 12 volt (only available with P1) and MVOLT 120-277 Volt 50/60HZ

LENS: Tempered Borosilicate Glass

LIGHT ENGINE: The light engine includes the highest output LEDs available coupled with a precision optic and light shaping films to provide the most efficient beams delivering light onto the intended surface. All within 3 MacAdam ellipses.

POWER MODULE: The LED driver is fully encapsulated within the die cast brass driver module housing. The thermally conductive epoxy material provides not only thermal dissipation of the driver for optimum operation but also the highest level of water ingress protection for this critical component.

ELECTRICAL: MVOLT (120-277) 50/60 Hz LED power supply. Class 2 electronic driver has a power factor >90%, THD <20%, and has an expected life of 100,000 hours with <1% failure rate. 6 kv Surge protection meets a minimum Category C Low operation (per ANSI/IEEE C62.41.2).

LISTING: cCSAus, suitable for wet locations, laboratory tests conducted by CSA to UL Standard UL-1598 and UL-8750.

GOVERNMENT PROCUREMENT:

BAA – Buy America(n) Act: Product qualifies as a domestic end product under the Buy American Act as implemented in the FAR and DFARS. Product also qualifies as manufactured in the United States under DOT Buy America regulations.

BABA – Build America Buy America: Product qualifies as produced in the United States under the definitions of the Build America, Buy America Act.

Please refer to www.acuitybrands.com/resources/buy-american for additional information.

WARRANTY: 5-year limited warranty. This is the only warranty provided and no other statements in this specification sheet create any warranty of any kind. All other express and implied warranties are disclaimed. Complete warranty terms located at: www.acuitybrands.com/support/warranty/terms-and-conditions

Consult factory for details.

NOTE: Actual performance may differ as a result of end-user environment and application. All values are design or typical values, measured under laboratory conditions at 25 °C. Specifications subject to change without notice.